

## Colchester District



## Hello!

Welcome to our monthly newsletter, which will keep you up to date on what we're doing to keep communities safe in Colchester. It will focus on:

- The work of the Community Policing Team and Local Policing Team
- Crime trends
- Crime prevention
- How you can contact us

The Community Policing Team includes the Town Centre Proactive Team. Their work includes responding to issues and carrying out proactive work, including public engagement, crime prevention, crime disruption, and safeguarding vulnerable people. The teams include specialist Missing Persons and Children' and Young Person officers, who work with partners in education and social care to protect vulnerable people from harm.

The Local Policing Team's main role is to respond to calls for assistance from members of the public, but they also carry out proactive patrols.

Our Colchester community and local policing officers are supported by detectives working in the Criminal Investigation Department, Domestic Abuse Investigation Team, and Crime and Public Protection Command. They investigate the more serious crimes that occur in north Essex, safeguard victims and bring offenders to justice.

Our priorities —in partnership with the Community Safety Partnership—mirror the Essex Police Force Plan for 2020/21

<p><b>To investigate and tackle:</b></p> <ul style="list-style-type: none"><li>• Violence in all its forms</li><li>• Online crime</li><li>• Anti-social behaviour</li><li>• Gangs and organised crime</li><li>• Safety/crime on the roads</li><li>• Domestic abuse</li><li>• Burglary</li></ul>	<p><b>To support and protect:</b></p> <ul style="list-style-type: none"><li>• Children and vulnerable people</li><li>• Victims of crime</li><li>• Visible policing in communities</li></ul>
---	---

Colchester has a very clear focus on:

**Violence** – disrupting those who commit serious organised crime and to dismantle the supply of controlled drugs in the district. We will target those who carry knives and commit violence, ensuring Colchester remains a safe place for all.

**Vulnerability** – we will ensure we engage with our communities to understand their needs and deliver policing to safeguard those who are vulnerable in our community.

**Victims** – we will provide victims with a first-class service.

**Visibility** – we will be visible in our communities to provide reassurance and reduce the fear of crime.





## **Chief Inspector Rob Huddleston**



Essex Police – Colchester



Follow **@CInspHuddleston** or  
**@EPColchester**



<http://www.essex.police.uk>

I have recently arrived back in Colchester following an interesting secondment with our Serious Crime Directorate, working across Essex and Kent Police areas. I want to take the opportunity to thank Inspector Jon Evans who took the reins and ensure Colchester remained a safe place to live work and visit. It has been great to catch up with our partners and see that the pace of change in Colchester continues with so many people passionate about improving our community from colleagues at Colchester Borough Council, Community 360 through to the volunteers at our many community groups.

Your policing teams have been working with our communities as we follow the roadmap from lockdown, to prepare to police the Euro Football and the various events planned through the summer.

As we find ourselves in the warmer weather we have seen a small rise in burglary offences, I am glad to be able to tell you a number of people have been arrested with suspects charged and remanded, great work from our uniform and CID teams. A good opportunity to remind you all of some crime prevention advice, that if you are in the back garden please close your front windows, always double lock your front door by lifting the handle when you get inside to engage the door security and you will find more advice later in this newsletter.

Road safety remains a hot topic and I encourage you to report in your concerns around speeding, we continue to undertake checks across our District and respond to our communities concerns.



## Policing Colchester's Night Time Economy

This month has seen the COVID restrictions reduced on our pubs, bars and restaurants. Colchester is a town with a vibrant night time economy and we work hard to ensure everybody using our town is kept safe. We work with partners such as the zone team and licensing team at Colchester Borough Council, ZED security, door staff across our venues, the CCTV operators and many more partner agencies to ensure you are safe when enjoying an evening out in our town. Over the weekend of 21st May 2021 our town team officers along with partners performed 39 License checks, visited 45 premises, spoke to over 300 members of the public, gave 15 verbal warnings and attended 13 priority incidents around the town.

PS Denning the Colchester town policing team sergeant said "We love to work together to promote and ensure a safe environment for all to enjoy. It has been wonderful to see the town coming alive at night once more and seeing the vast majority being courteous to one another.



## Road Safety

Improving the safety of the roads in Essex is one of our force priorities. Unfortunately more people lose their lives or become seriously injured on our roads than by any other means. We know people moan and will say we have nothing better to do, but they are issues raised by our communities and also ensures people drive responsibly and do not risk other people's lives. Also, criminals use cars, and these are people we love to have a chat with.

In the last month we have carried out speed checks across numerous villages, including but not limited to; Dedham, Chapel, Tiptree, Layer, Abberton and Parsons Heath.

We have also had people drive down the high street at excessive speeds causing people to jump out of the way, unfortunately for them one of our unmarked vehicles was in the high street at the time and kindly seized the vehicle due to the manner it was driven under section 59 of the police reform act 2002 which gives police the power to seize a vehicle being driven in this manner. The driver will also be having to explain his driving to the magistrate as he appears at court for a number of driving offences.



## Engagement

As we are coming out of lockdown we are keen to visit, talk and listen to all of our communities. Please keep an eye on our social media for events in your community. If you would like police to attend an event or group activity then please email [colchestercommunitypolicingteam@essex.police.uk](mailto:colchestercommunitypolicingteam@essex.police.uk) to arrange.



## Child sexual exploitation awareness

This month has seen us work closely with the Essex Safeguarding Childrens Board, Colchester Borough Council and Colchester train station to improve the awareness of the signs of vulnerable children being exploited within Colchester.

Work undertaken included speaking to local businesses, taxi drivers, station staff and young people around the signs of exploitation and how to report concerns around children being exploited.

Everyone has a part to play in preventing the exploitation of children, from parents, to schools, to taxi drivers—if you come in to contact with children, we would advise you to learn the signs of exploitation and what to do if you notice any of the signs.

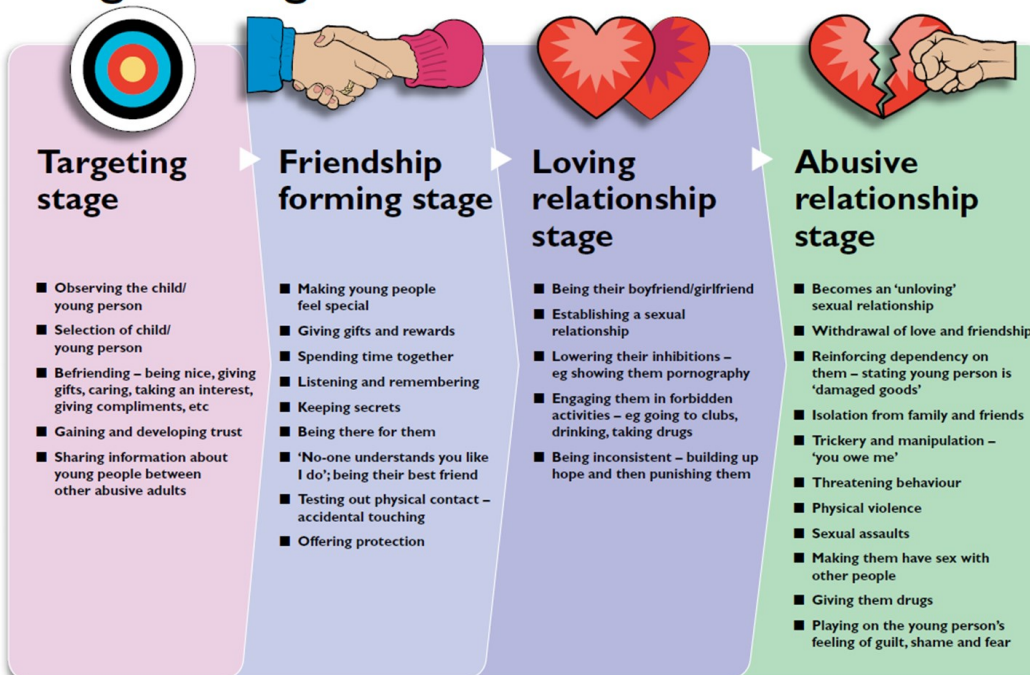
There is free training to raise awareness via the ESCB website [www.escb.co.uk](http://www.escb.co.uk) which is available to parents to spot the signs in your children, or people whom work in Essex to spot the signs.

If you suspect a child is being exploited you can contact the police using 999 in an emergency, or the 101 telephone system in a non emergency.

Other agencies such as ESCB, Barnardo's and the childrens society are also available for help and advice.



### The grooming line



### DID YOU KNOW?

- Online grooming of children is increasing every year, children may be travelling by train to meet an abuser.
- Did you know that 40% of those transporting drugs for county line networks use trains for their transportation?"
- Children can be trafficked within Essex to transport drugs for gangs or organised crime groups



# Some recent activity on social media

Essex Police - Colchester District  
27 May at 17:12

PD Oreo was busy in #Colchester yesterday sniffing out large amounts of Cannabis and Class A drugs.

Also helped locate two weapons that will no longer present a threat on our streets.

Four dealt with by way of Community Resolutions and one arrested.

#EPColchester

#opcColchester

#ProtectingAndServingEssex

#47



Essex Police - Colchester District  
4 June at 11:44

\*\*\*Our officers are not professional photographers and Photoshop was not used in any of these photos..... I know it surprised me as well!\*\*\*

Last week officers from #Colchester community policing team attended Welshwood park road in Parsons Heath to conduct more speed checks.

170 cars were checked, two drivers were issued tickets for 38 and 39 Mph on a 30mph road.

One driver was also given a warning for Flashing his headlights to warn other drivers. He thought he was "Doing them a favour" but this has the potential to cause accidents and can be an offence.

It is also important to note that we are limited in the positions we can deploy speed cameras due to either line of sight for the speed gun, places we can safely pull over vehicles and places where it is safe for officers to stand to use the speed gun.

We understand that to an "untrained eye" these may appear to be less than ideal locations to catch people speeding but we have to make sure we conduct speed checks as safely as possible for everyone.

#epcolchester



Essex Police - Colchester District  
21 May at 14:00

Officers from the Town team would like to thank members of the public who helped an elderly gentleman who had fallen in St Johns street earlier today.

The members of the public helped the Gentleman and stayed with him until Police and Ambulance arrived to take him to hospital.

#EPColchester



Essex Police - Colchester District  
25 May at 09:16

Colchester's Community Policing team were out yesterday in the Dedham and Arleigh Area yesterday conducting speed survey's responding to road safety concerns raised in that area by the Parish council.

Lamb corner - Speed limit 30 mph - Average speed detected was 27mph, highest recorded 36mph.

Long road west - Speed limit 30mph limit - Average speed detected was 28mph, highest recorded 42mph.

This builds on a deployment last week by one of a volunteer special constables who conducted enforcement checks last week and issued 5 Traffic offence reports (TOR) to drivers who were way above the speed limit the highest on that occasion was 52 mph!

Please keep your speeds down in the area (and others) especially given the weather conditions in the last 3 weeks and large amounts of surface water on the roads.

Essex Police - Colchester District  
8 June at 18:05

Another First for #Colchester Community Policing Team(CPT)

Over the weekend the team arrested a Male for Drink Driving on a Spin E scooter.

The male driver was seen on Lexden Road by Pc Pullham and Ps Buckley swerving from left to right as he drove away from the town centre.

The road side test was completed and the result was around double the legal limit which was supported by a further test back in custody.

The male has been charged and will be attending court in the near future.

Over the course of the weekend a further 6 privately owned E-scooters have been seized after being illegally used on our roads.

While e-scooters are legally available to purchase, it's currently against the law to ride a privately-owned e-scooter in any public place in the UK.

This includes roads, pavements, parks or town centres The only place a privately-owned e-scooter can be used is on private land.

#EPColchester

#yousaidwedid

Essex Police - Colchester District  
7 June at 14:30

Over the weekend PCSO COMPTON from #Colchester Town Proactive Team along with officers from the local policing team, community team and a dog unit were called to Primark to assist security detaining four males who were involved in theft from shops in the town.

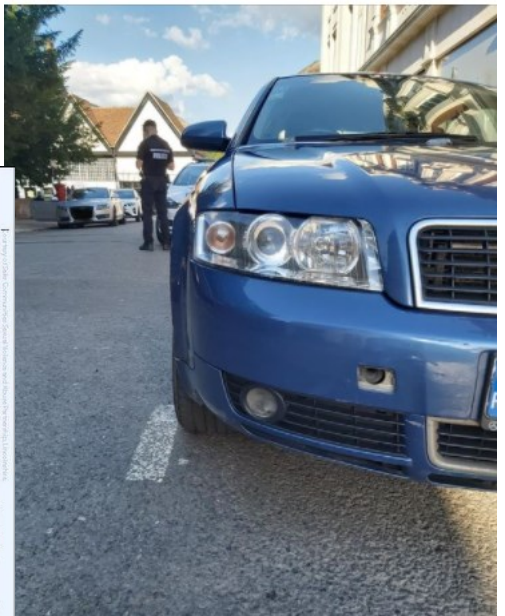
1 Suspect was arrested  
1 Suspect reported for offences  
1 suspect still under investigation

The vehicle the males were using was also checked and found to be unsafe.

The owner of the vehicle has now been ordered to have the car made safe. He has also been fined.

#Epcolchester

#opccolchester



## #ASK FOR ANGELA

“ HI I'M ANGELA,

ARE YOU ON A DATE THAT ISN'T WORKING OUT?

DO YOU FEEL LIKE YOU'RE NOT IN A SAFE SITUATION?

IS YOUR TINDER OR POF DATE NOT WHO THEY SAID THEY WERE ON THEIR PROFILE?

DOES IT ALL FEEL A BIT WEIRD?

IF YOU GO TO THE BAR AND ASK FOR 'ANGELA' THE BAR STAFF WILL KNOW YOU NEED SOME HELP GETTING OUT OF YOUR SITUATION AND WILL CALL YOU A TAXI OR HELP YOU OUT DISCREETLY - WITHOUT TOO MUCH FUSS ”



ESSEX POLICE  
Protecting and serving Essex

CALL ESSEX POLICE  
101  
IN AN EMERGENCY ALWAYS CALL 999

Essex police Colchester District

@EPColchester



## Crime Prevention Advice

As the weather heats up, and the restrictions we have all been living under are gradually lifted, it is remember to keep your home secure. I am sure many of you will now be out and about, seeing friends and family and some of you may be lucky enough to be going on holiday some time soon. But please remember the little added security measures you used to do before going out, such as double checking your doors are locked, or that your windows are closed. Leaving a door or window open while you are out is an attractive opportunity for thieves to enter your home.

Here's what we recommend you do before you go out:

- close and lock all your doors and windows, even if you're only going out for a few minutes
- double-lock any door
- make sure that any valuables are out of sight
- keep handbags away from the letterbox or cat flap and hide all keys including car keys, as a thief could hook keys or valuables through even a small opening
- never leave car documents or ID in obvious places such as kitchens or hallways
- in the evening, shut the curtains and leave lights on
- if you're out all day, then it's advisable to use a timer device to automatically turn lights and a radio on at night
- set your burglar alarm
- make sure the side gate is locked
- lock your shed or garage
- lock your bike inside a secure shed or garage, to a robust fitting bolted to the ground or wall, like a ground anchor



Going away?

Here are five tips to help you keep your home and belongings stay safe while you're away:

1. if you're off on holiday and wish to post anything on social media, make sure your posts aren't public and that they're only seen by your friends
2. leave lights and a radio on a timer to make the property appear occupied
3. get a trusted neighbour to keep an eye on your property or join a Neighbourhood or resident Watch Scheme
4. consider asking your neighbours to close curtains after dark and to park on your drive
5. remember to cancel newspaper and milk deliveries



## E-Scooters

On Monday 14 June we will be launching an initiative aimed at owners and riders of privately-owned e-scooters used in public areas.

This will primarily focus on educating owners and riders about the current legislation regarding privately owned e-scooters but, where necessary, we will take enforcement action if there is evidence of anti-social behaviour or related offences. We want to make sure that everyone in Essex is safe and those using privately-owned e-scooters do not pose a greater risk of harm to the public, or themselves, due to their presence on public highways and pavements.

The rider of a privately-owned e-scooter being used in a public area is required to hold a driving licence and insurance, but many people are not aware of this. By educating riders and encouraging them not to use privately-owned e-scooters in a public area, we hope that the number of e-scooters being used illegally, and any perceived anti-social behaviour, will be reduced.

We recognise that a number of these scooters will be owned and ridden by young people, so we have taken the opportunity to write to schools advising parents of our plans. We're not trying to criminalise anyone, but please ensure you know the rules before buying your child an e-scooter.

Superintendent Sam Smith, who is leading this initiative, said:

"We have written to schools this week and asked them to raise the awareness with parents about the laws surrounding private e-scooters. Unfortunately, private e-scooters are only to be used on private land, and are illegal if used on public land and we need to raise awareness of this legislation for everyone's safety.

"We're not trying to target young people, but we need them to know that there are aspects to riding an e-scooter that could put them, or the wider public, at risk if the e-scooter is being ridden in a dangerous manner.

"Privately owned e-scooters cannot be insured as they are not roadworthy and, therefore, they present a danger to the rider and the rest of the public."

In the next few weeks, when we stop and speak to any young person riding a privately-owned e-scooter, we will speak to their parents to raise awareness of the law.

Superintendent Smith went on to say:

"We are aware that e-scooters are also used by adults who use them as a means of leisure and transport, but we will stop and speak to them too. We want to raise public awareness and also continue to deal with reports of e-scooters being involved in crime.

"Where there is persistent use of privately-owned e-scooters, or evidence of other offences, we will take appropriate action. This includes e-scooter seizure and riders being reported for driving offences."

Please stop and have a chat with your local Community Police Teams and ask them any questions you might have about e-scooters.

You can visit our website for more information [www.essex.police.uk/police-forces/essex-police/areas/essex-police/campaigns/campaigns/2021/e-scooters/](http://www.essex.police.uk/police-forces/essex-police/areas/essex-police/campaigns/campaigns/2021/e-scooters/)

Anyone who wants to know more about e-scooter legislation and official trials of e-scooters should visit <https://www.gov.uk/guidance/e-scooter-trials-guidance-for-users>

