

Community Led Street Design

Winstree Road Concept Design Context
18-08-20

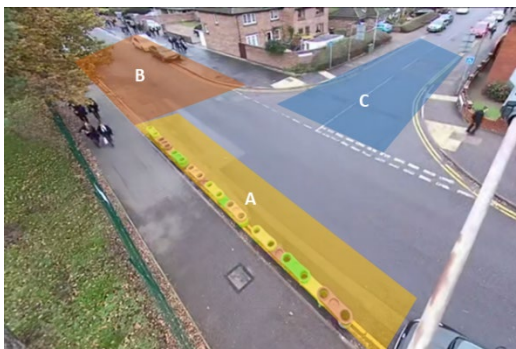


Window 1 Trials: Monitoring

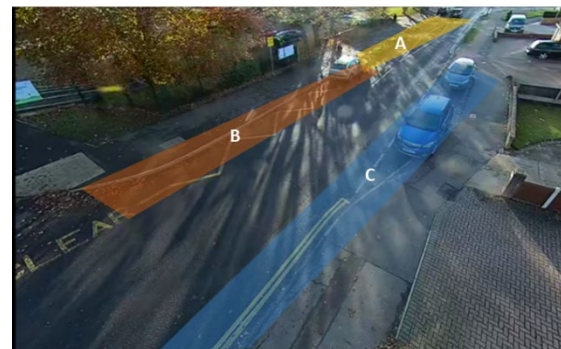
Impact on Parking: Responding to Community Feedback



Chapel Road Parking Monitoring Zone



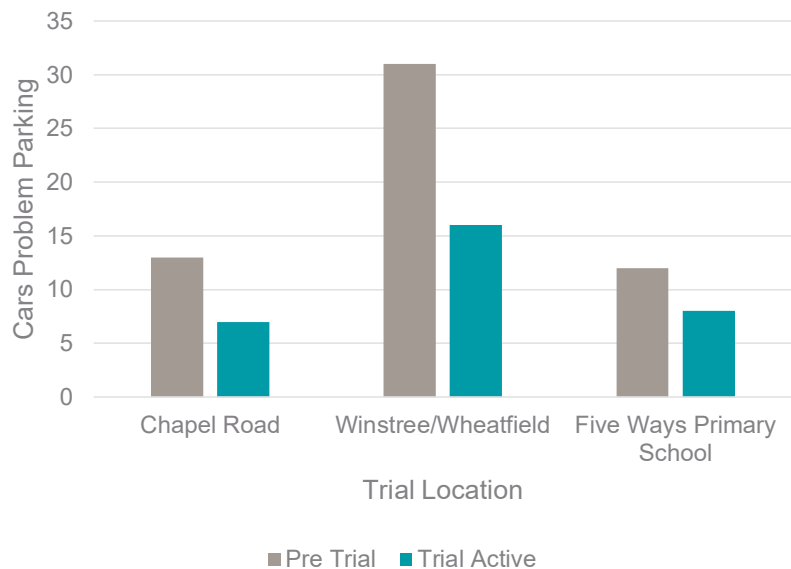
Winstree/Wheatfield Rd Parking Monitoring Zones



Fiveways Parking Monitoring Zones

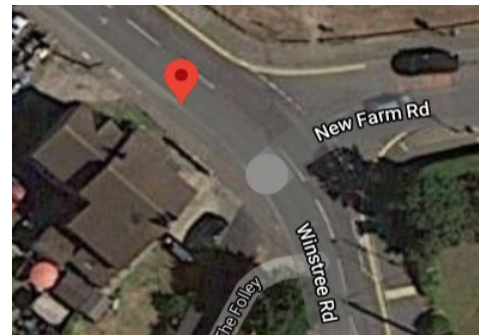
Window 1 Trials: Monitoring

Impact on Parking: Responding to Community Feedback



As well as the monitoring zones **pavement parking** was also recorded at the trial location.

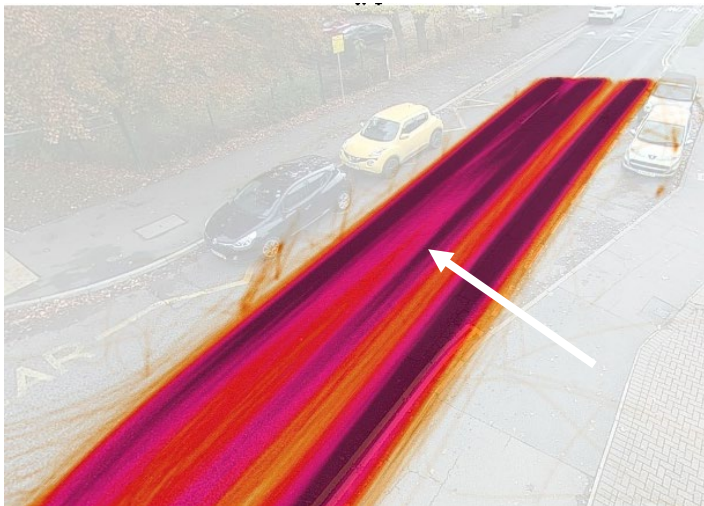
The bar chart shows the positive impact the trials had on problem parking in all three locations.



Chapel Road Pavement Parking

Window 1 Trials: Monitoring

Car Tracking: Fiveways Example



Tracking taken 08-11-19 pre-trial



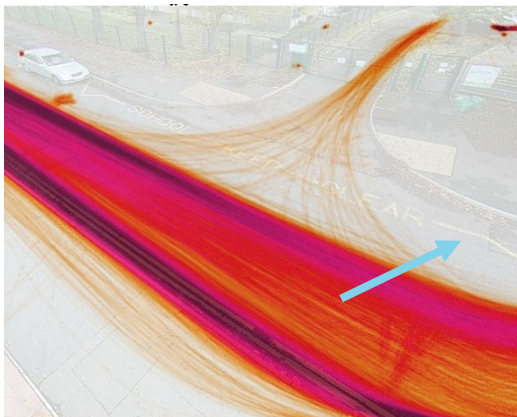
Tracking taken 13-11-19 during trial

Key Findings:

During the trial **cars traveling South weren't pushed towards the centre** of the carriageway as they didn't need to avoid as many parked cars at school drop off and collection

Window 1 Trials: Monitoring

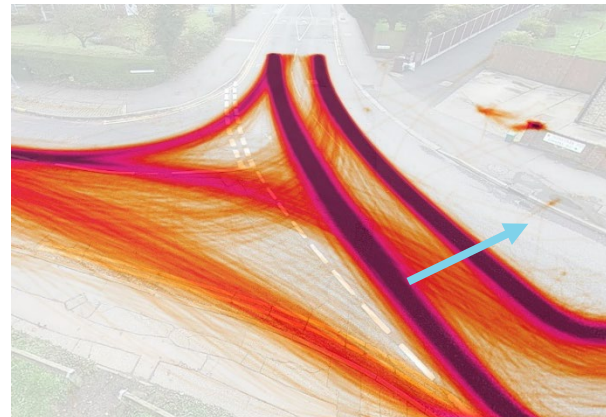
Car Tracking:



Fiveways Primary School Entrance



Winstree & Wheatfield Rd Junction



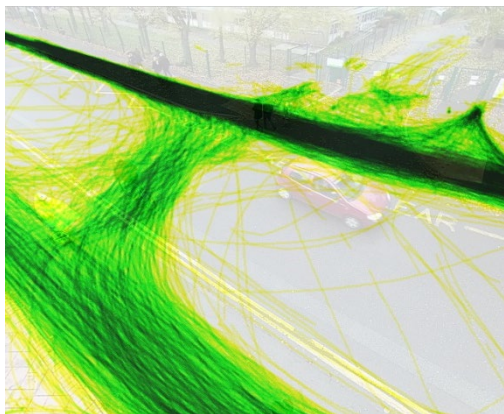
Chapel & New Farm Rd Junction

Key Findings:

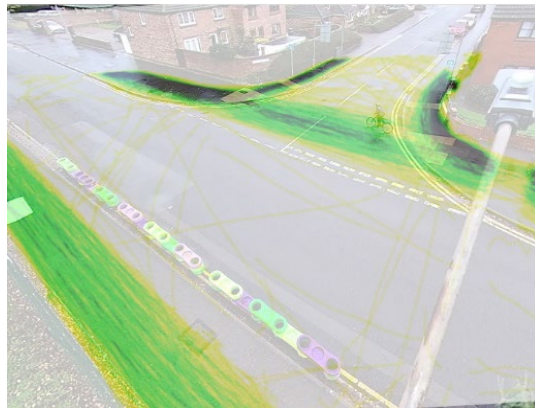
There is scope to tighten geometry and **reclaim road space** for pedestrians and cyclists

Window 1 Trials: Monitoring

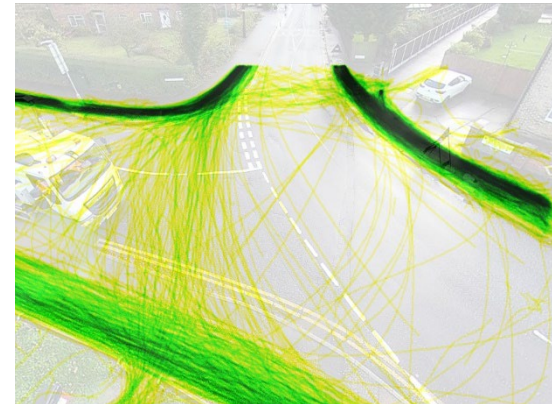
Pedestrian Tracking:



Fiveways Primary School (Patrol Impact)



Winstree & Wheatfield Rd Junction



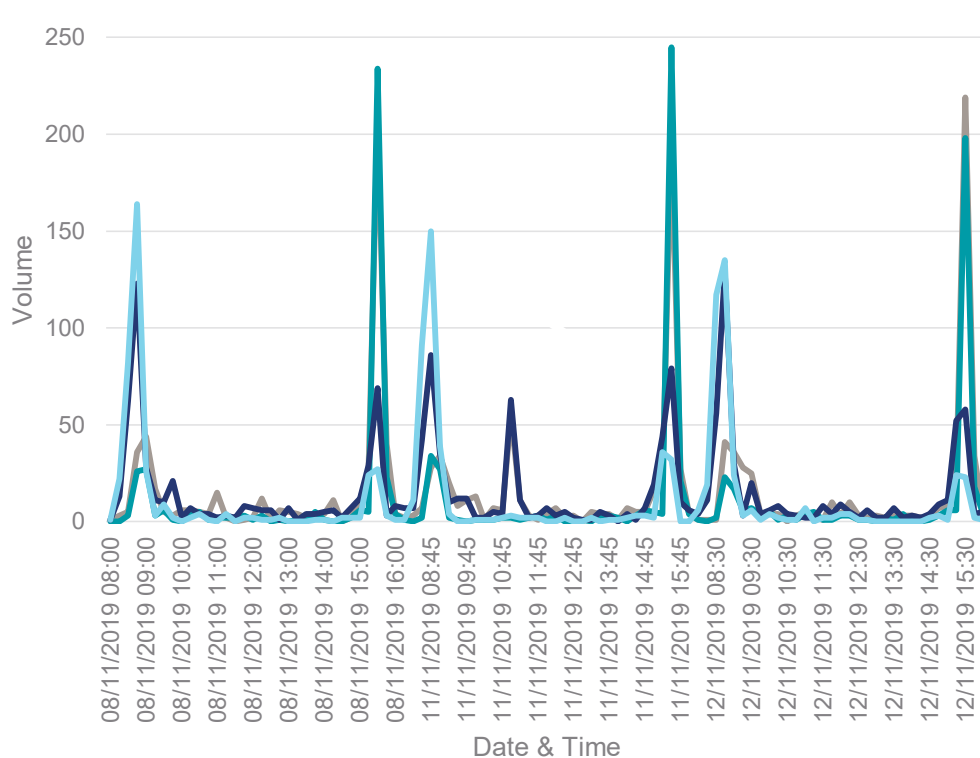
Chapel & New Farm Rd Junction

Key Findings:

There are **clear desire lines in all trial locations** where pedestrians are crossing and this needs to be incorporated into crossing point designs

Window 1 Trials: Monitoring

Volume: Pedestrians (Fiveways Example)



- WinstreeSouth-EastFootpathOfWinstreeRd-headingSouth
- WinstreeSouth-WestFootpathOfWinstreeRd-headingSouth
- WinstreeSouth-EastFootpathOfWinstreeRd-headingNorth
- WinstreeSouth-WestFootpathOfWinstreeRd-headingNorth

Key Findings:

There is a **higher volume of pedestrians at school closure** time with a 15 minute peak of 245 people

More pedestrians travelling North at school opening and then South at school closure

The **West side** footpath has slightly **higher footfall peaks**

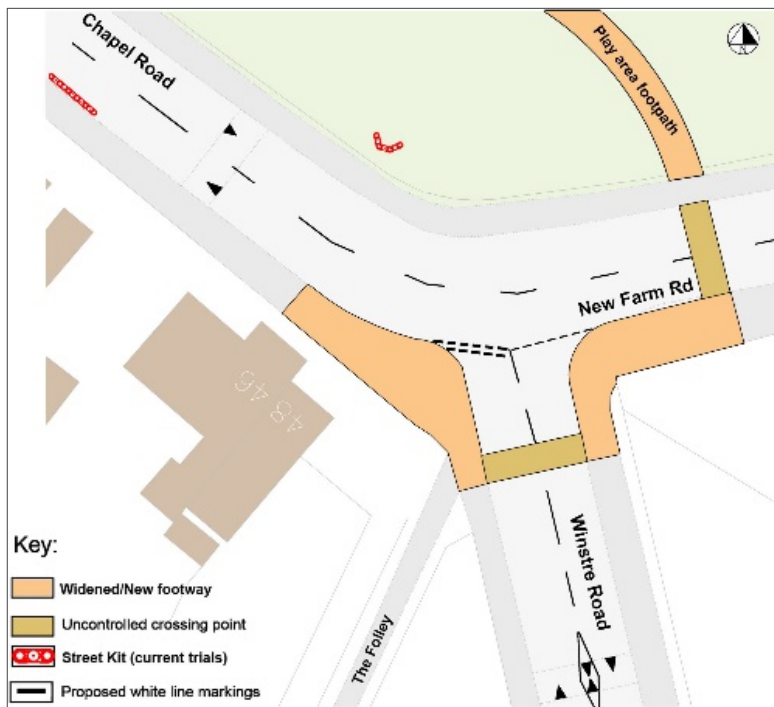
Community Feedback

October to December 2019



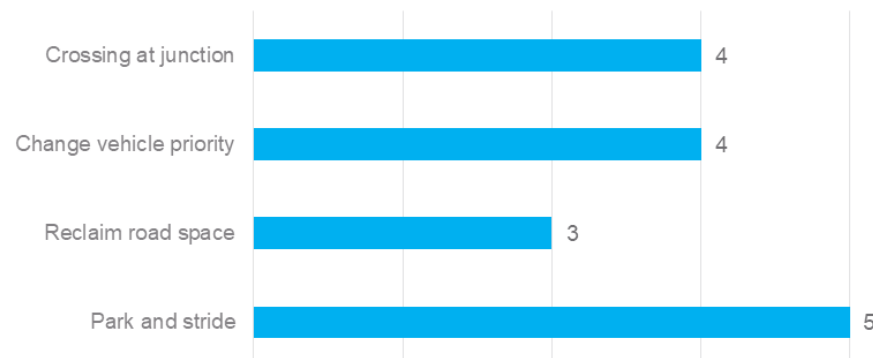
Concept Design Feedback

Detailed Feedback: Chapel Road



Respondents were asked to indicate their support for different elements of the design with a score between 1 and 5, where **5 equals 'agree'** and **1 equals 'disagree'**

Average response for design elements

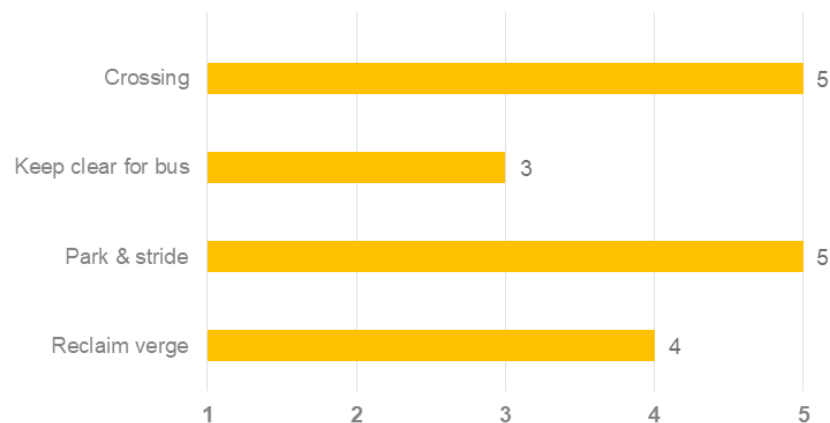


Concept Design Feedback

Detailed Feedback: Fiveways Primary School



Respondents were asked to indicate their support for different elements of the design with a score between 1 and 5, where **5 equals 'agree'** and **1 equals 'disagree'**



Concept Design Development

Overall Consideration:

- **Promotion of Park & Stride** routes responding to community feedback
- Feasibility of trialling **20mph speed limit** on Chapel/Winstree Road
- Current concept designs in general validated by monitoring findings and community feedback
- Direct engagement with Lexden Springs to further embed **disability requirements**

Elements to Investigate: Chapel Road

- **Junction priority** in relation to traffic volume and walking/cycling requirements

Elements to Investigate: Fiveways Primary School

- **Reclaiming carriageway** to help control problem parking and accommodate peak pedestrian flow
- **Additional crossing** towards Holly Road

Sustrans is the charity making it easier for people to walk and cycle.

We connect people and places, create liveable neighbourhoods, transform the school run and deliver a happier, healthier commute.

Join us on our journey.

www.sustrans.org.uk

Registered Charity No. 326550 (England and Wales) SC039263 (Scotland)
VAT Registration No. 416740656.

